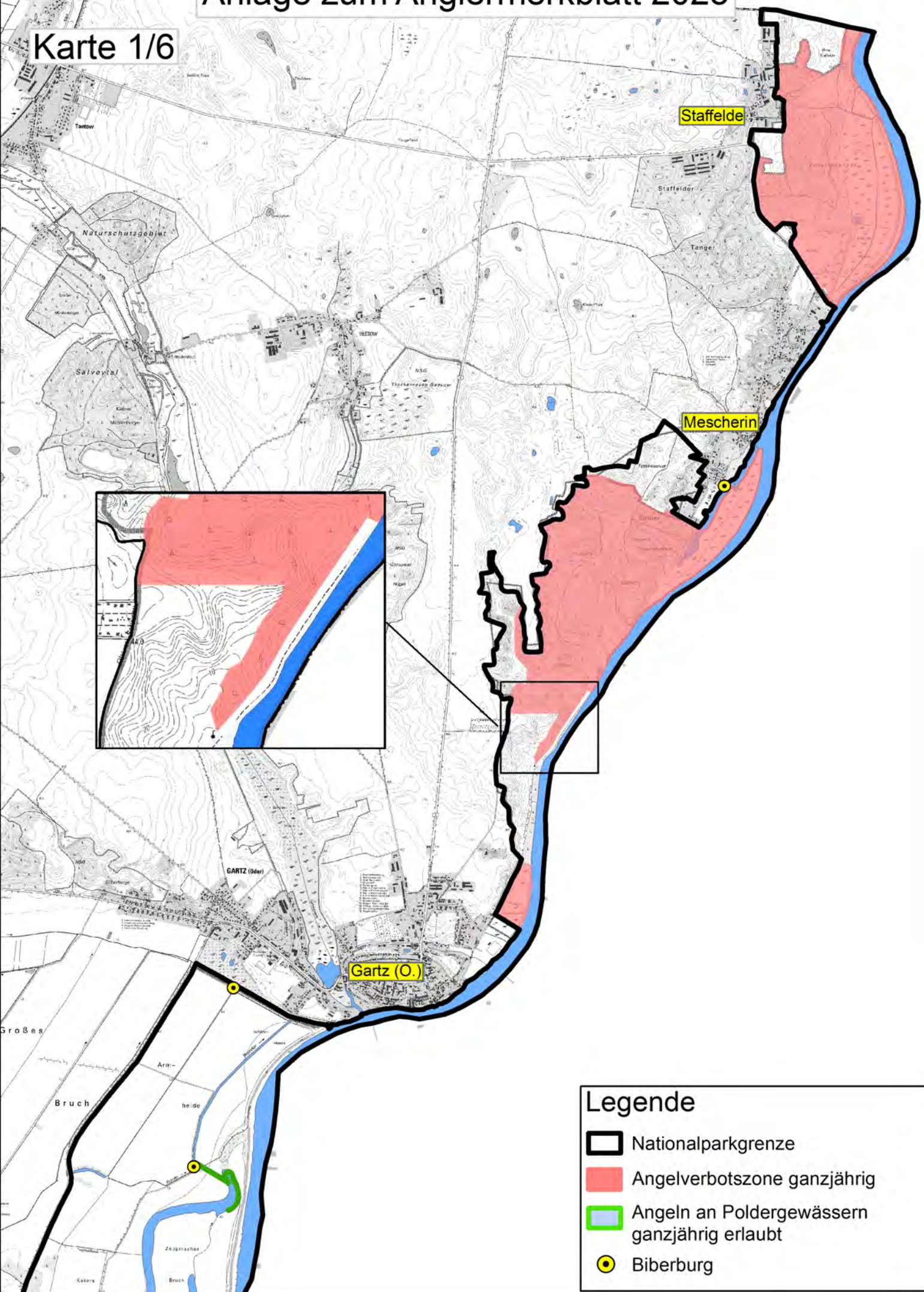


Anlage zum Anglermerkblatt 2025

Karte 1/6

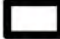





Staffelde

Mescherin

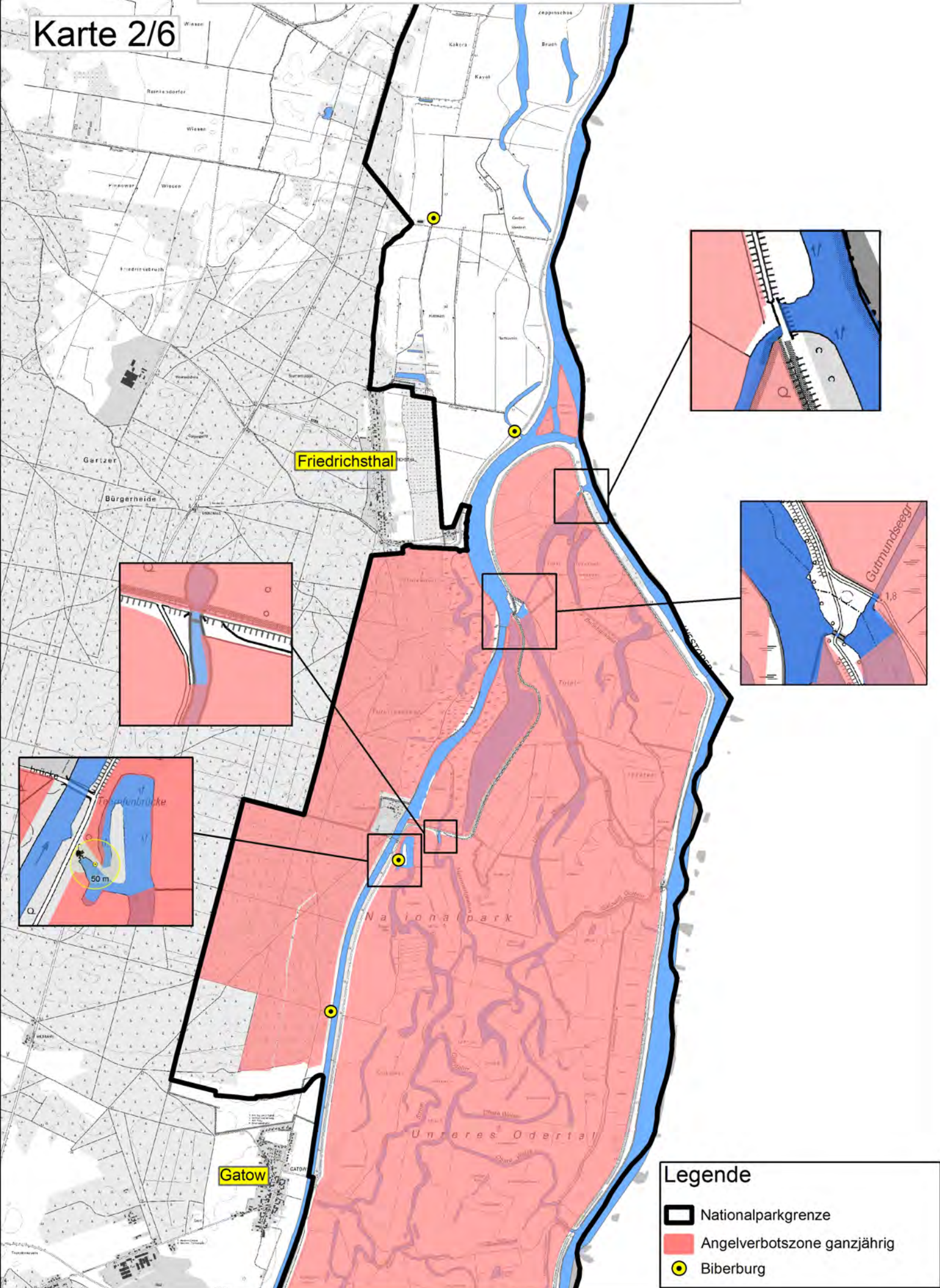
Gartz (O.)

Legende

-  Nationalparkgrenze
-  Angelverbotszone ganzjährig
-  Angeln an Poldergewässern ganzjährig erlaubt
-  Biberburg

Anlage zum Anglermerkblatt 2025

Karte 2/6






Friedrichsthal

Gatow

Nationalpark

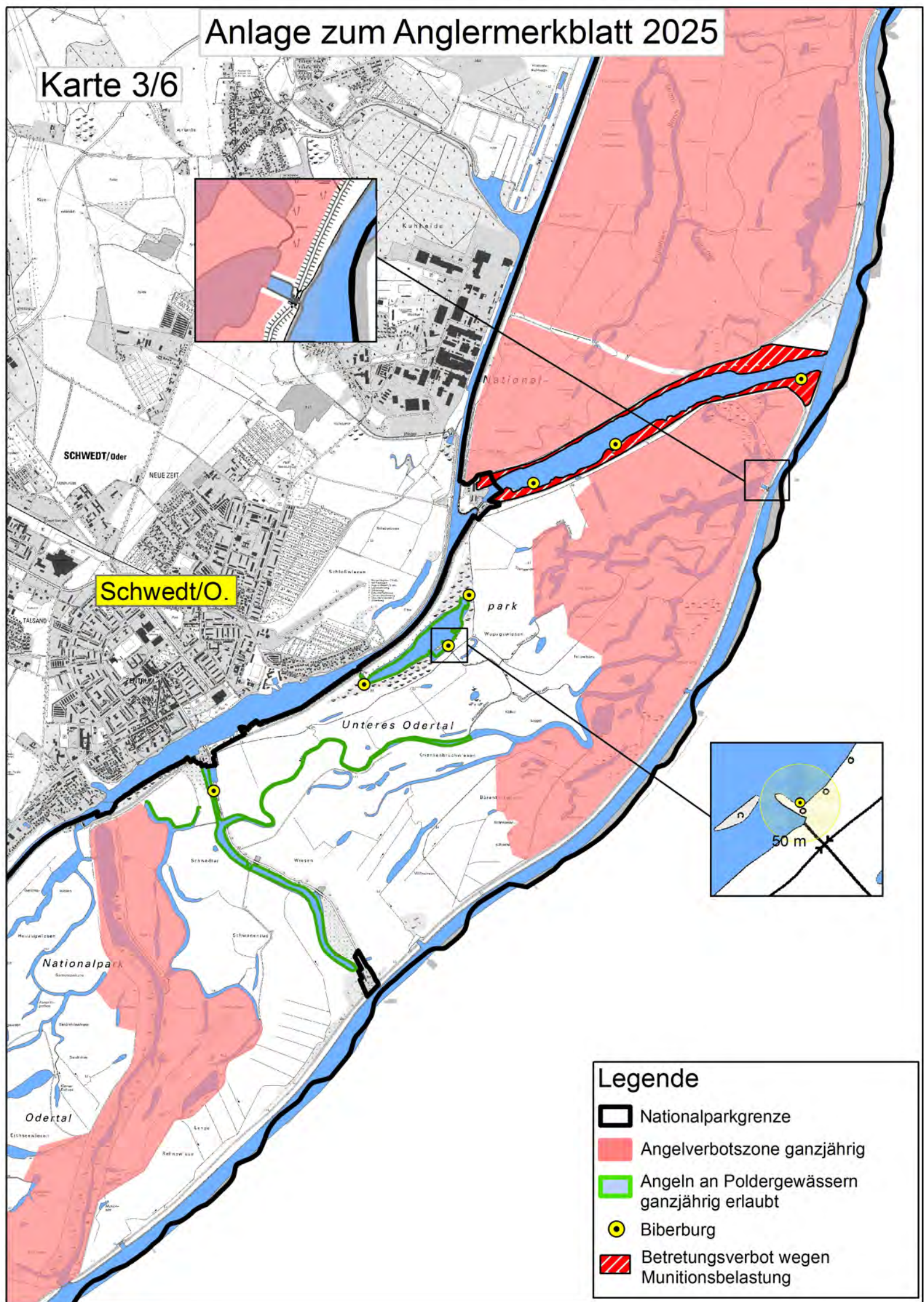
Unteres Odertal

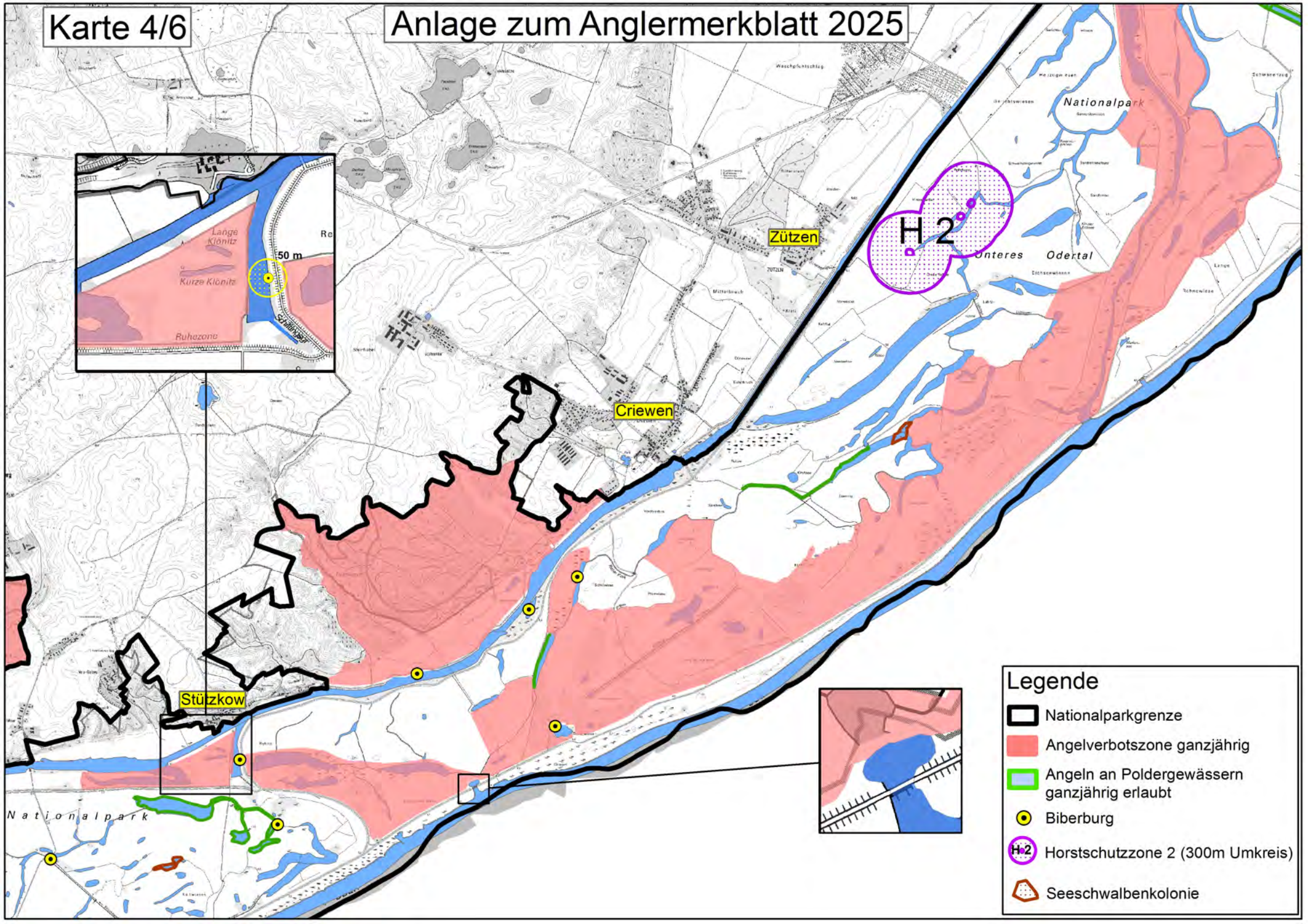
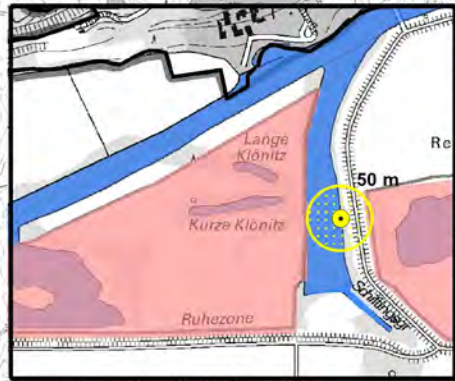
Legende

-  Nationalparkgrenze
-  Angelverbotszone ganzjährig
-  Biberburg

Anlage zum Anglermerkblatt 2025

Karte 3/6










Legende

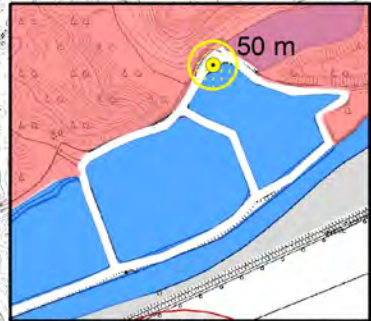
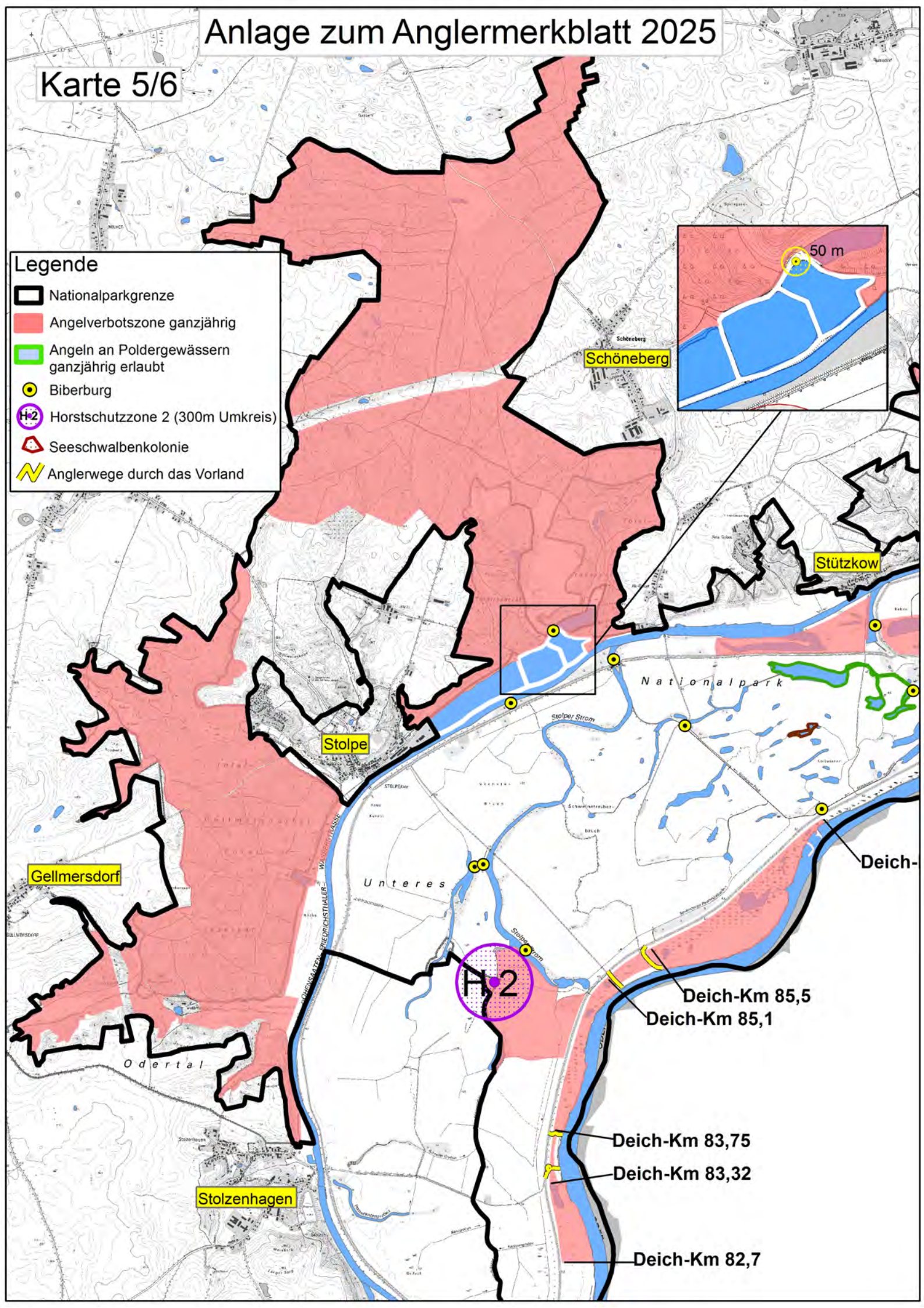
- Nationalparkgrenze
- Angelverbotszone ganzjährig
- Angeln an Poldergewässern ganzjährig erlaubt
- Biberburg
- Horstschutzzone 2 (300m Umkreis)
- Seeschwalbenkolonie

Anlage zum Anglermerkblatt 2025

Karte 5/6

Legende

-  Nationalparkgrenze
-  Angelverbotszone ganzjährig
-  Angeln an Poldergewässern ganzjährig erlaubt
-  Biberburg
-  Horstschutzzone 2 (300m Umkreis)
-  Seeschwalbenkolonie
-  Anglerwege durch das Vorland



Gellmersdorf

Stolpe

Schöneberg

Stützkow

Nationalpark

Unteres

Odertal

Stolzenhagen

Deich-

Deich-Km 85,5
Deich-Km 85,1

Deich-Km 83,75

Deich-Km 83,32

Deich-Km 82,7

Anlage zum Anglermerkblatt 2025

Karte 6/6

Stolpe

Deich-Km 87,2

H2

Deich-Km 85,5
Deich-Km 85,1

Deich-Km 83,75

Deich-Km 83,32


Deich-Km 82,7

Deich-Km 81,6

Stolzenhagen

Lunow

Legende

-  Nationalparkgrenze
-  Angelverbotszone ganzjährig
-  Angeln an Poldergewässern ganzjährig erlaubt
-  Biberburg
-  Horstschutzzone 2 (300m Umkreis)
-  Seeschwalbenkolonie
-  Anglerwege durch das Vorland